



13 NURSERY GARDENS

BRIDPORT, DT6 3BX

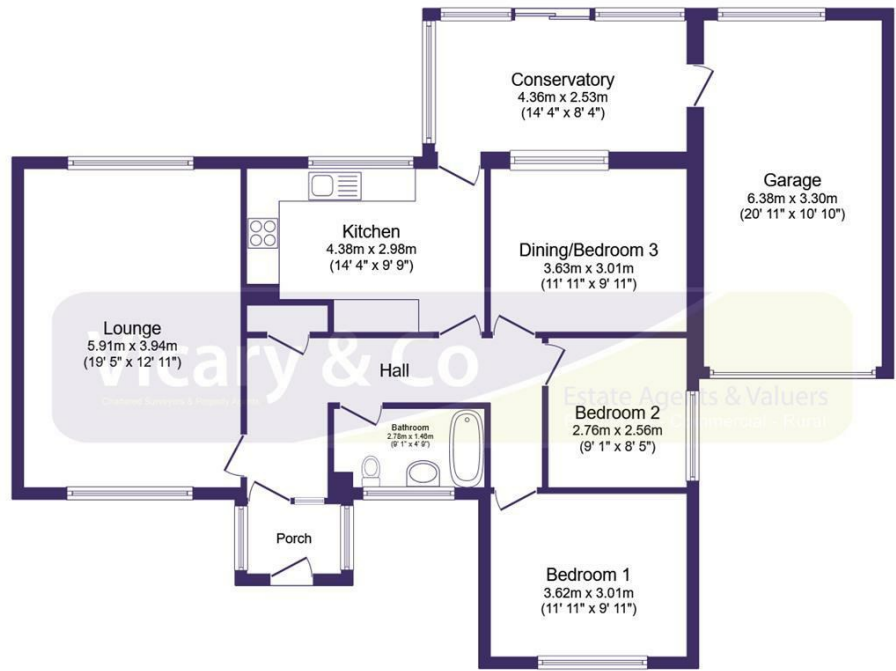
£435,000
FREEHOLD

A three bedroom detached bungalow, set in a quiet cul-de-sac just outside the bustling heart of Bridport and situated within level walking distance of the town centre with no onward chain. Council Tax Band: E
EPC: D (62)

Vicary & Co
Chartered Surveyors & Property Agents

Estate Agents & Valuers
Residential - Commercial - Rural

Nursery Gardens, Bridport, Dorset, DT6 3BX



Floor Plan
Floor area 121.2 sq.m. (1,305 sq.ft.)

Total floor area: 121.2 sq.m. (1,305 sq.ft.)

This floor plan is for illustrative purposes only. It is not drawn to scale. Any measurements, floor areas (including any total floor area), openings and orientations are approximate. No details are guaranteed, they cannot be relied upon for any purpose and do not form any part of any agreement. No liability is taken for any error, omission or misstatement. A party must rely upon its own inspection(s). Powered by www.Propertybox.io



Energy Efficiency Rating		
	Current	Potential
Very energy efficient - lower running costs		
(92 plus) A		
(81-91) B		
(69-80) C		79
(55-68) D	62	
(39-54) E		
(21-38) F		
(1-20) G		
Not energy efficient - higher running costs		
England & Wales	EU Directive 2002/91/EC	

Agents Note: Whilst every care has been taken to prepare these particulars, they are for guidance purposes only. All measurements are approximate and are for general guidance purposes only and whilst every care has been taken to ensure their accuracy, they should not be relied upon and potential buyers/tenants are advised to recheck the measurements

Axminster Office Sales
5 South Street
Axminster
Devon
EX13 5AD

0129733449
sales@vicaryandco.com
<http://www.vicaryandco.com>

